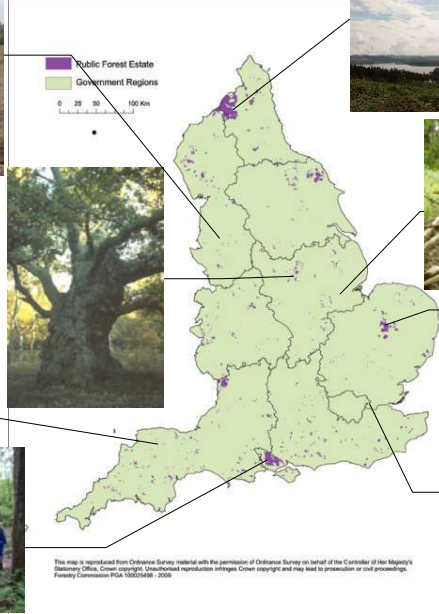


## The long-term role of the Forestry Commission Public Forest Estate in England.

Consultation  
July - Sept 2009

## Lots of land



## Lots of people



> 40 million visits

31 visitor centres

122 picnic sites

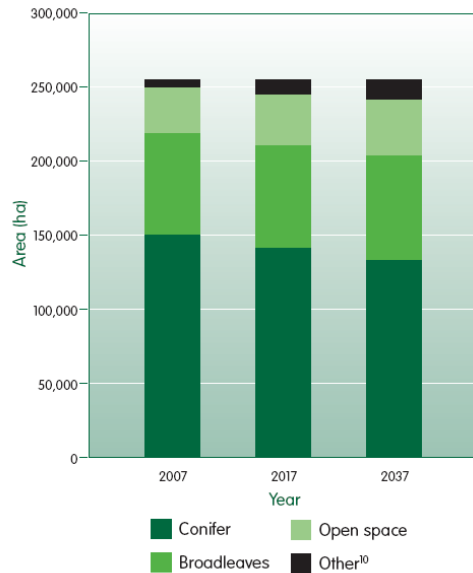
230 car parks

## Large scale



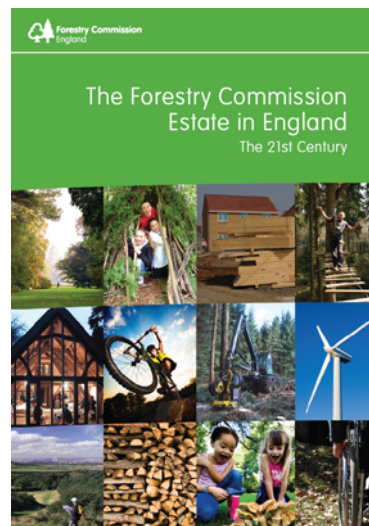


## Overall national trends

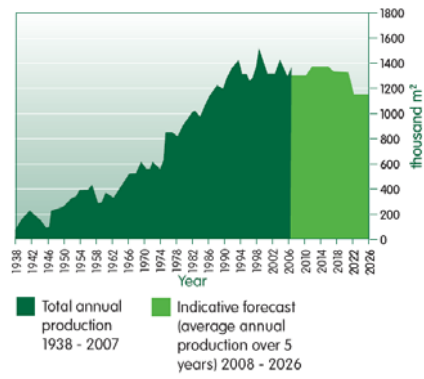
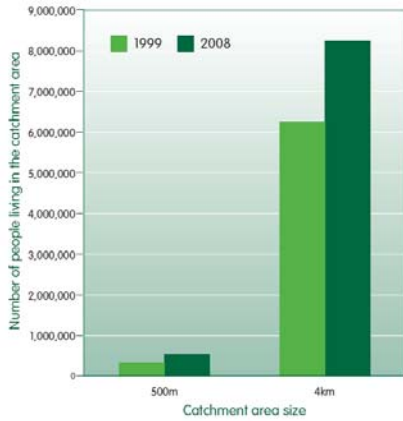


## The Study

“..consider the future long-term sustainable role for the public forest estate and make recommendations about any necessary changes to improve its ability to deliver relevant priorities in the Strategy for England’s Trees, Woods and Forests and contribute to other government objectives.”



## Impact of lots of decisions



## Paying for the Estate



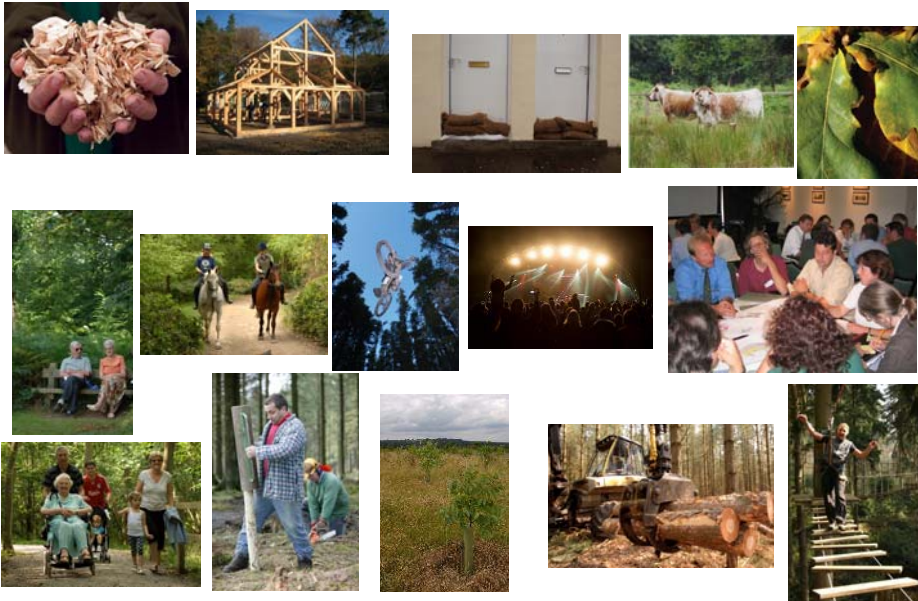
## Consultation - general



11 28/09/2009

Public Forest Estate Consultation

## Consultation - priorities



12 28/09/2009

Public Forest Estate Consultation



[www.forestry.gov.uk/england-estatestudy](http://www.forestry.gov.uk/england-estatestudy)

A screenshot of a web browser displaying the Forestry Commission website. The page title is "The Long-term Role of the Forestry Commission Public Forest Estate in England: Consultation". The page content includes a navigation menu, a search bar, and a main text area. A large green banner is overlaid on the page with the text "28 September 2009". The page also features a "Useful Reading" section with links to "Summary" and "Introduction", and a "Forms" section with links to "Online Response Form (Survey Monkey)" and "Online PDF Response Form".

