



## Towards the best, together

A Clinical Vision for our NHS, now and for the next decade

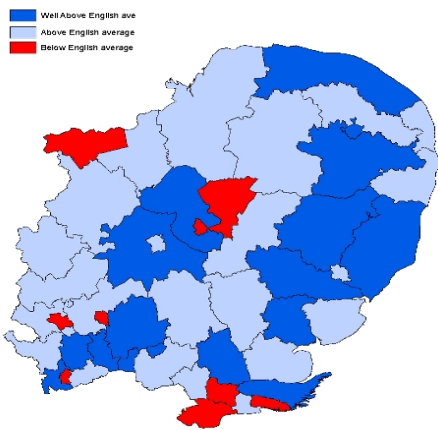


## The Case for Change

- There are still **major inequalities** in people's health and wellbeing
- There are differences of over 10 years in **life expectancy** depending on which part of the region you were born in
- There are one million **smokers** in the east of England; smoking accounts for 50% of all **health inequalities**
- 60% of all deaths in the east of England are from **stroke, heart disease and cancer**
- Over 1.6 million people in the east of England have a **long term condition**
- The NHS **lags behind** other countries on **treatment outcomes**
- There is **variation** in the **quality** of treatment that patients receive
- Care needs to be **more convenient** and **easier to access**
- And it needs to meet the **expectations** of citizens
- **Disease patterns** are changing and the population is getting older
- **New technology and treatments** are changing the landscape
- **More people** could be treated **in the community**

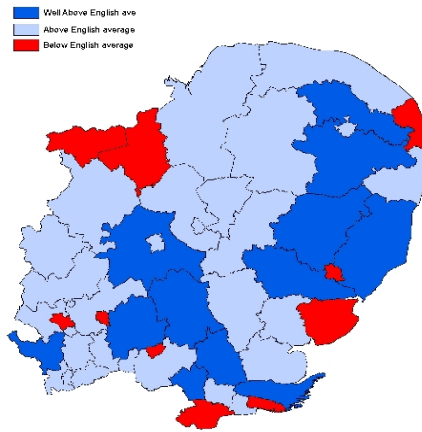
## Life expectancy in the East of England

Female Life Expectancy 2002-04,  
Local Authority Areas below, above and well above the English average



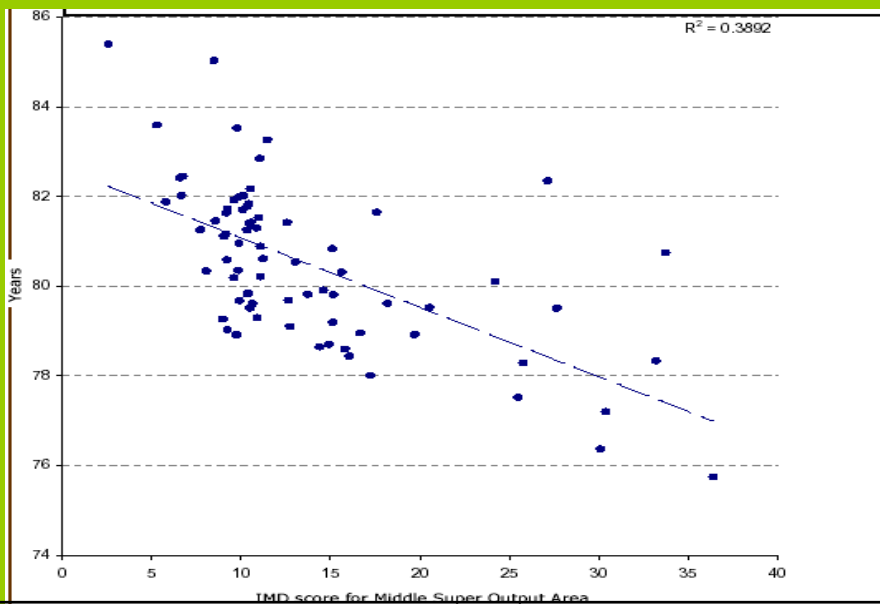
© Crown Copyright. All rights reserved. OS licence no. GD272671

Male Life Expectancy 2002-04,  
Local Authority Areas below, above and well above the English average



© Crown Copyright. All rights reserved. OS licence no. GD272671

## Variation in life expectancy within a PCT (Suffolk)





**“Provide the best health service in England”**  
**“Add to the Quality and length of life of local people”**

**A better patient experience**

- We will deliver year on year improvements in patient experience
- We will extend access guarantees to more of our services
- We will ensure that GP practices improve access and become more responsive to the needs of all patients
- We will ensure that NHS primary dental services are available locally to all who need them

**Improving people’s health**

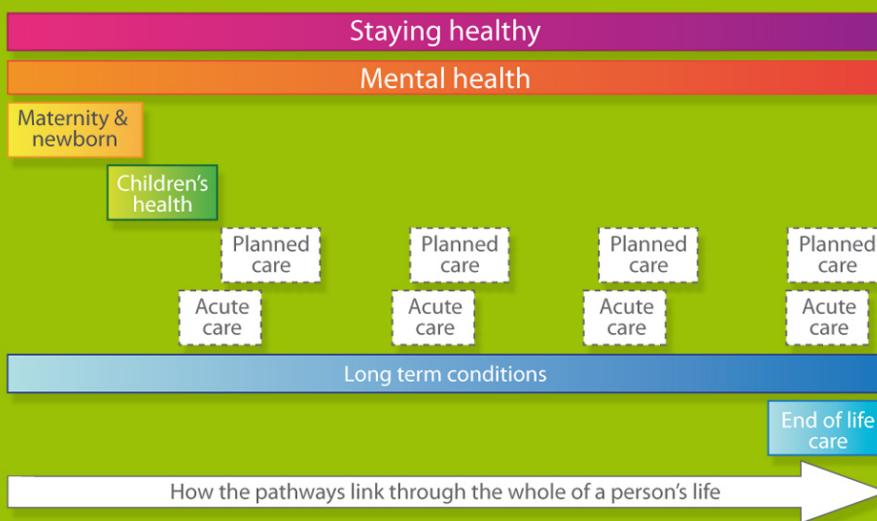
- We will ensure fewer people suffer from, or die prematurely from, heart disease, stroke and cancer
- We will make our health service the safest in England
- We will improve the lives of those with long term conditions

**Reducing unfairness in health**

- Working with our partners, we will reduce the differences in life expectancy between the poorest 20% of our communities and average in each PCT
- We will ensure healthcare is as available to marginalised groups and looked after children as it is to the rest of us
- We will cut the number of smokers by 140,000
- We will halt the rise in obesity in children and then seek to reduce it

*Towards the best, together*

**How the Clinical Pathway Groups support life long Health and Healthcare...**



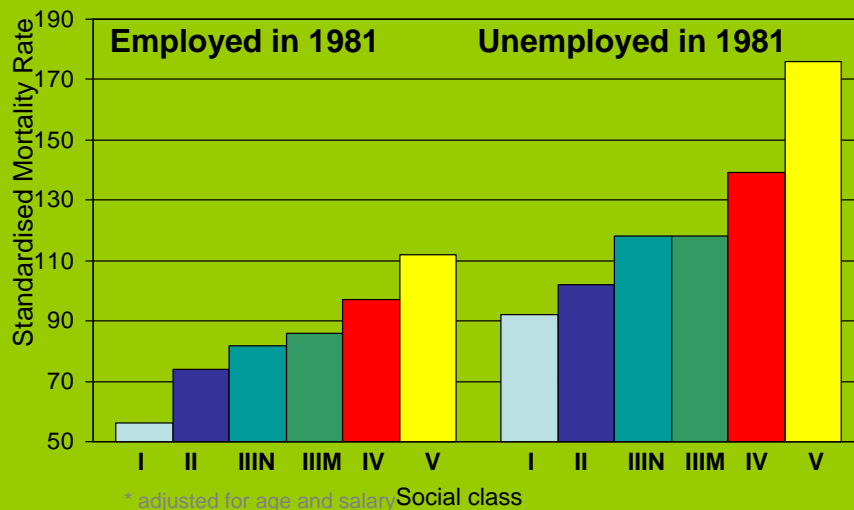


## Staying Healthy, we will...

- Ensure we focus on **improving health and wellbeing**, through **better prevention** and treatment services **for the whole population** and wellbeing services targeted to reduce unfairness
- Guarantee access to **early screening and immunisation** for all, to detect risk factors, early on-set of disease or prevent disease
- Offer an assessment for the risk of heart disease to **everyone aged 40-74** and provide **lifestyle support and treatment** for those who will benefit
- Cut the number of **smokers by 140,000** and seek to **reduce childhood obesity**
- Deliver packages of **integrated lifestyle support services** to targeted groups
- Create an innovation fund to support **new approaches to staying healthy**
- **Strengthen health partnerships** across local authority, voluntary, private and public sectors
- Launch **Staying Healthy in the Workplace** with employers and our own staff
- Do all we can to **fight climate change** and reduce its impact on health

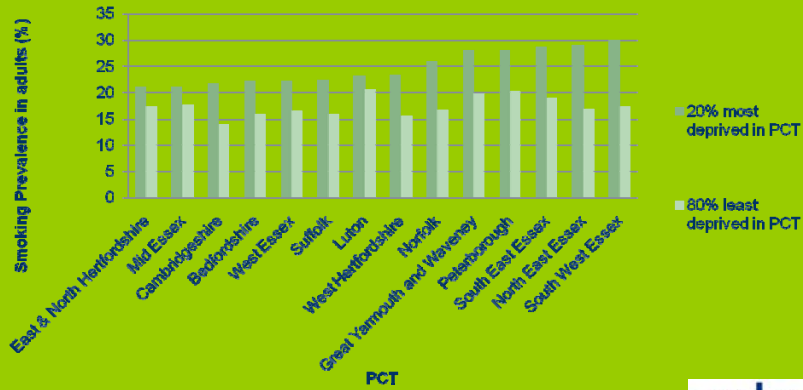


## Mortality\* of men aged 16-64 by social class and employment status at the 1981 census



1981 LS Cohort. \*England & Wales: mortality 1981-92

## Differences in the smoking prevalence between most deprived 20% and rest of the population within the PCT



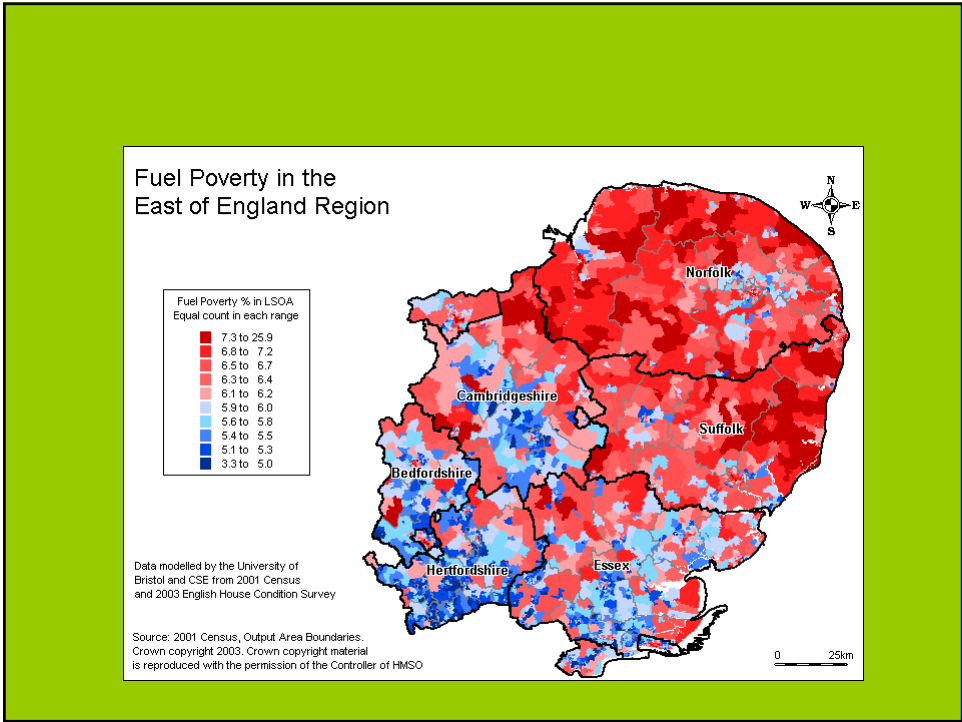
Source: East of England Lifestyle Survey 2008



## Long Term Conditions, we will...

- Remember that **people with long term conditions are people first** – “a person with diabetes” and not “a diabetic”
- Ensure **personal health plans** for everyone with a long term condition
- Extend **expert patient programmes**.
- Improve timely **access to specialist advice** and diagnostics in primary care
- Guarantee **access to cardiac and pulmonary rehabilitation**
- Ensure that **comprehensive disease registers** are in place for long term conditions
- Increase emphasis on **self care** and **pilot patient held budgets**
- Agree and measure a **new set of patient outcomes and patient experience indicators**.
- Ensure **all relevant staff have training** on delivering a self care approach





#### Babergh Health Profile 2008

This profile gives a snapshot of health in your area. With other local information, this Health Profile has been designed to support action by local government and primary care trusts to tackle health inequalities and improve people's health.

Health profiles are funded by the Department of Health and produced annually by the Association of Public Health Observatories.

To view health profiles for other local authorities, go to [www.healthprofiles.info](http://www.healthprofiles.info)

**Babergh at a glance**

- The health of people in Babergh is generally better than the typical average for areas from their income and socio-economic status, and long living life expectancy is a major 'good' indicator.
- There are health inequalities across Babergh, notably gender, age and deprivation, and among ethnic groups.
- Local authorities and primary care trusts are working together to tackle health inequalities and improve people's health.
- The health of people in Babergh is generally better than the typical average for areas from their income and socio-economic status, and long living life expectancy is a major 'good' indicator.
- There are health inequalities across Babergh, notably gender, age and deprivation, and among ethnic groups.
- Local authorities and primary care trusts are working together to tackle health inequalities and improve people's health.

#### erpho West Essex PCT Health and Quality Profile 2007

This profile is produced annually for the West Essex Primary Care Trust (PCT) and is based on data from the 2006 Health and Quality Profile Survey (HQPS).

**Key indicators**

- Life expectancy at birth: 78.5 years (men), 82.5 years (women)
- Age-standardised mortality rate: 10.5 per 1,000 population
- Age-standardised hospitalisation rate: 12.5 per 1,000 population
- Age-standardised self-harm rate: 1.5 per 1,000 population

#### erpho Mental health profile Great Yarmouth and Waveney PCT

**Introduction**

The purpose of this profile is to provide a snapshot of mental health in your area. It is based on data from the 2006 Mental Health Profile Survey (MHPS).

**Mental health demographics**

- The prevalence of mental health problems is higher in people with lower educational attainment.
- The prevalence of mental health problems is higher in people with lower income.
- The prevalence of mental health problems is higher in people with lower employment status.
- The prevalence of mental health problems is higher in people with lower housing tenure.
- The prevalence of mental health problems is higher in people with lower ethnic diversity.

**Key messages**

- People with mental health problems are more likely to live in areas with lower educational attainment, lower income, lower employment status, lower housing tenure, and lower ethnic diversity.
- People with mental health problems are more likely to live in areas with higher deprivation.
- People with mental health problems are more likely to live in areas with higher unemployment rates.
- People with mental health problems are more likely to live in areas with higher housing costs.
- People with mental health problems are more likely to live in areas with lower ethnic diversity.

#### erpho Babergh Child Health profile September 2008

**Introduction**

This profile provides a snapshot of child health in your area. It is based on data from the 2006 Child Health Profile Survey (CHPS).

**The child population in this area**

- Age-standardised mortality rate: 10.5 per 1,000 population
- Age-standardised hospitalisation rate: 12.5 per 1,000 population
- Age-standardised self-harm rate: 1.5 per 1,000 population

**Children living in poverty**

- 15% of children live in poverty
- 10% of children live in relative poverty
- 5% of children live in absolute poverty



*Towards the  
best, together*

A Clinical Vision for our NHS, now and for the next decade